






Leonardo Braccio

I
Ombrellone a braccio in alluminio verniciato a polveri epossidiche colore grigio antracite. Molto apprezzato da sempre per la struttura robusta e adatta per un uso intenso professionale.

UK
Cantilever parasol in aluminum with epoxy coated frame color Anthracite Grey. Since ever particularly appreciated for the strong structure and suitable for a heavy professional employ.

D
Seitenarmschirm aus Aluminium Anthrazitgrau pulverbeschichtet. Seit immer besonders fuer die Stabilitaet geschaezt. Auch fuer einen gewerblichen Einsatz geeignet.

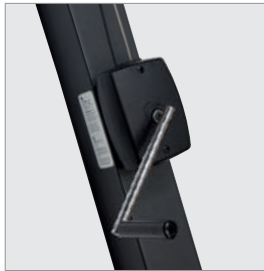
		
400	300x300 350x350 400x400	300x400



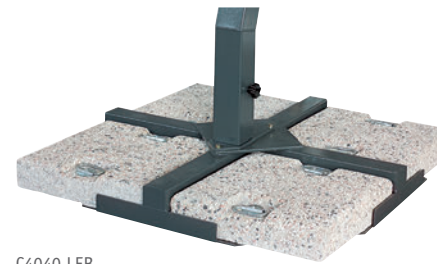
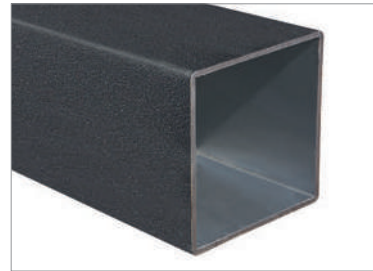
F
Parasol avec bras deporté en aluminium vernis gris anthracite. Toujours apprécié pour sa structure robuste et adapte à un usage professionnel intensif.

E
Parasol de palo lateral pintado con polvo epoxi en color antracita. Muy valorado desde siempre por la estructura robusta y adecuada para un uso profesional intenso.

NL
Vrijhangende parasol van gepoedercoat aluminium in antracietgrijs. Al jarenlang populair vanwege de goede stabiliteit. Ook geschikt voor gebruik in de horeca.



Aluminium



C4040 LEB

NEW



C4040 LEB

I
Ombrellone a braccio laterale robusto.
Telaio: Alluminio e componenti in acciaio;
verniciato a polveri colore antracite.
Accessori in nylon.

UK
Strong cantilever parasol. Frame: Powder
coated aluminium anthracite grey. Nylon
accessories.

D
Starker Pendelschirm. Gestell aus
pulverbeschichtetem Aluminium Farbe
Anthrazitgrau.
Zubehoer aus Nylon.

F
Parasol bras deporté robuste. Armature:
Aluminium vernis couleur gris anthracite.
Accessoires en nylon.

E
Brazo lateral resistente.
Estructura: aluminio y piezas de acero,
recubierto con polvo de antracita.
Accesorios de nylon.

NL
Robuuste vrijhangende parasol. Mast en
baleinen: grijs geëpoxeerd aluminium en
staal.

↑	COD	MEASURES		CHARACTERISTICS					
		KG	M ²	Icon 1	Icon 2	Icon 3	Icon 4	Icon 5	Icon 6
4,0	C4000 LEB	68	0,35	92x92	ALU DARK	8	ALU DARK	18x30	
3,0x3,0	C3030 LEB	68	0,35	92x92	ALU DARK	8	ALU DARK	18x30	
3,5x3,5	C3535 LEB	70	0,36	92x92	ALU DARK	8	ALU DARK	18x30	
4,0x4,0	C4040 LEB	100	0,48	92x92	ALU DARK	8	ALU DARK	18x35	
3,0x4,0	C3040 LEB	70	0,36	92x92	ALU DARK	8	ALU DARK	18x30	



Ombrellone a braccio robusto in alluminio.

TELAIO: Interamente in alluminio e acciaio verniciati a polveri colore grigio antracite. Sostegno verticale sez. 10x10 cm. Stecche in alluminio sezione 18x30 mm, facilmente intercambiabili abbinare a corone in plastica brevettate per aumentare la resistenza e durata, semplificare la manutenzione e migliorare il design. Con aggancio singolo dedicato per ogni stecca. Tutti gli accessori sono zincati antiruggine e verniciati a polveri colore antracite. Apertura e chiusura con meccanismo a manovella con elegante cornice coprifilo. Stecca blocco antivento per rendere l'ombrellone più stabile e resistente in caso di vento e con possibilità di inclinazione. Inclusa base in metallo girevole 360°C. TESSUTO: Acrilico Dralon 350gr/m2 impermeabilizzato e trattato antimuffa garantito Teflon. Con camino antivento. Tinto massa

Strong side post aluminum parasol

FRAME: Aluminum and steel structure epoxy coated anthracite color. Side post section 10x10 cm. Easily interchangeable strong aluminum ribs, section 18x30, with patented plastic crowns that increase the resistance and life, simplify the maintenance and improve the design. Ribs are properly fixed to the crown one by one. All components are epoxy coated anthracite grey color. Easy opening and closing with crank mechanism, whose steel wire is covered by a smart covering. With wind stop rib for a better stability of the parasol in windy condition and to allow the inclination of the parasol. 360° rotating metallic base is included.

FABRIC: Acrylic Dralon 350gr/m2 waterproof Teflon and anti-mold treated. With wind cap. Solution dyed. 5 years warranty



.Dimensione (metri)
 .Dimensions (meters)
 .Masse (Meter)
 .Dimensions (metrès)
 .Dimensiones (en metros)
 .Afmeting in (meters)



.Set canaline
 .Raingutter set
 .Rегerinnen
 .Set gouttières
 .Canalizador Lluvias
 .Set regengoten



.Fodero
 .Cover bag
 .Schutzhuelle
 .Housse
 .Forro
 .Afdekhoes



.Viteria in inox e ottone nichelato
 .Screws in Stainless steel and nickel plated brass
 .Edelstahlschrauben und vernickeltes Messing
 .Visserie inox et laiton nickelé
 .Tornillos en acero inoxidable y bronce niquelado
 .Schroeven van rvs en vernikkeld messing



.Codice
 .Code
 .Artikelcode
 .Code
 .Código
 .Artikelcode



.Con base/supporto
 .With base/support
 .Mit Staender/Huelse
 .Avec base/support
 .Con base/ soporte
 .Inclusief standaard



.Doppia carrucola
 .Double pulley
 .Doppelter Seilzug
 .Double poulie
 .Doble polea
 .Dubbele katrollen

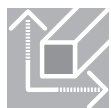


.Tipo finitura della struttura/sostegno/componenti
 .Finishing for frame/structure/components
 .Ausfuehrung des Gestells/der Struktur/der Bestandteile
 .Finition armature/structure/composants
 .Tipo de acabado de la estructura/Soportes/componente

👁 Pag. 68



.Lunghezza
 .Length
 .Laenge
 .Longueur
 .Longitud
 .Lengte



.Sezione stecche
 .Rib section
 .Strebenprofil
 .Section baleines
 .Sección varillas
 .Profiel baleinen



.Sistema telescopico
 .Telescopic system
 .Teleskopsystem
 .Système telescopique
 .Sistema telescópico
 .Telescoop systeem



.Colore dei componenti/stecche
 .Component/Ribs colour
 .Farbe der Bestandteile und Streben
 .Couleur des composants et baleines
 .Color de los componentes ò piezas/Varillas ò listones



.Peso
 .Weight
 .Gewicht
 .Poids
 .Peso
 .Gewicht



.Camino antivento
 .Wind cap
 .Windfang
 .Souffle
 .Chimenea antiviento
 .Windvang



.Sistema retrattile
 .Retractile system
 .Einziehbares System
 .Système retractile
 .Sistema retráctil
 .Inklapbaar systeem



.Stecca con sistema "easy change"
 .Ribs with "easy change" system
 .Streben mit "easy change" System
 .Baleines avec "easy change" système
 .Varillas con sistema de " cambio fácil"
 .Baleinen met het "easy change" systeem



.Volume (m3)
 .Volume (m3)
 .Volumen (m3)
 .Volume (m3)
 .Volumen (m3)
 .Volume (m3)



.Volant
 .Valance
 .Volant
 .Volant
 .Faldón
 .Volant



.Base girevole a 360°C
 .Revolving base 360°C
 .360°C drehbarer Staender
 .Base tournant 360°C
 .Base giratoria 360°
 .360° draaibaar



.Ø Palo (mm)
 .Ø Pole (mm)
 .Ø Mast (mm)
 .Ø Mat (mm)
 .Diametro mm (asta)
 .Ø Mast (mm)



.Blocco antivento
 .Wind stop
 .Windstop
 .Block antivent
 .Freno para el viento
 .Windstop



.Inclinazione fino a 20°
 .Inclination up to 20°
 .Neigung bis zu 20°
 .Inclination jusqu'à 20°
 .Inclinación hasta 20°



.Massima Stabilità Ottenibile
 .Maximum Obtainable Stability
 .Maximal Erhaeltliche Stabilitaet
 .Maximum De Stabilitée Realisable
 .Maxima Estabilidad Posible
 .Maximaal Bereikbare Stabilitiet



.Sezione sostegno (mm)
 .Support section (mm)
 .Mastprofil (mm)
 .Section support (mm)
 .Sección soporte (mm)
 .Mast (mm)



.Con meccanismo manovella
 .With winding mechanism
 .Mit Kurbelmechanismus
 .Avec mécanisme manivelle
 .Con manivela
 .Met opwindmechanisme



.Inclinazione fino a 60°
 .Inclination up to 60°
 .Neigung bis zu 60°
 .Inclination jusqu'à 60°
 .Inclinación hasta 60°



.Peso consigliato in condizioni normali
 .Recommended weight in normal condition
 .Empfohlenes gewicht unter normalen bedingungen
 .Poids recommande dans des conditions normales
 .Peso recomendado en condiciones normales
 .Aanbevolen gewicht onder normale omstandigheden



.Stecche
 .Ribs
 .Streben
 .Baleines
 .Varillas
 .Baleinen



.Piastre cemento
 .Cement slabs
 .Kiesbetonplatten
 .Dalles ciment
 .Planchas de cemento
 .Betontegel



.Peso minimo richiesto
 .Minimum ballast required
 .Erforderliches mindestgewicht
 .Poids minimum requis
 .Peso minimo requerido
 .Minimaal vereist gewicht