



Napoli Braccio

I




La praticità della soluzione a braccio laterale interamente in acciaio e alluminio verniciato antracite mantiene il design raffinato inalterato nel tempo.

UK

Handy cantilever parasol entirely made of epoxy lacquered steel and aluminium, keeps its refined design unchanged.

D

Praktischer Seitenarmschirm ganz aus pulverbeschichtetem Stahl und Aluminium. Unveränderliches und raffiniertes Design.

		
350	300x300	200x300 300x200 300x400

F

Parasol pratique avec bras excentré en acier et aluminium vernis qui n'altère en rien le design.

E

Práctica sombrilla completamente fabricada en acero y aluminio lacados, reservado para diseños inalterados y refinados.

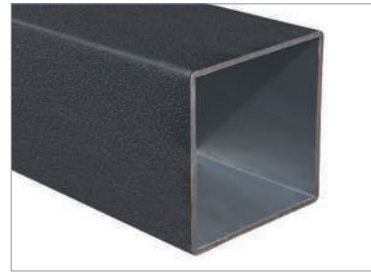
NL

Praktische zweevende parasol geheel in geepoexed staal en aluminium. Uniek door zijn geraffineerde vormgeving.





Aluminium



I
Ombrellone a braccio laterale. Telaio in alluminio e componenti in acciaio; verniciato a polveri colore antracite. Accessori in nylon.

UK
Cantilever parasol. Frame: Powder coated aluminium anthracite grey. Nylon accessories.

D
Seitenarmschirm. Gestell aus pulverbeschichtetem Aluminium und Bestandteile aus Stahl Farbe Anthrazitgrau. Zubehoer aus Nylon.

F
Parasol bras deporté. Armature en aluminium vernis, composants en acier couleur gris anthracite. Accessoires en nylon.

E
Parasol de brazo lateral. Herraje: aluminio y componentes de acero, recubierto con polvo de antracita. Accesorios de nylon.

NL
Vrijhangende parasol. Mast en baleinen: grijs geëpoxide aluminium en staal.

	COD	MEASURES		CHARACTERISTICS						
		KG	M ³	Icon 1	Icon 2	Icon 3	Icon 4	Icon 5	Icon 6	
3,5	C3500 NAB	50	0,20	75x75	ALU DARK	8	ALU DARK	18x30		
3,0x3,0	C3030 NAB	50	0,20	75x75	ALU DARK	8	ALU DARK	18x30		
2,0x3,0	C2030 NAB	48	0,20	75x75	ALU DARK	6	ALU DARK	18x30		
3,0x2,0	C3020 NAB	48	0,20	75x75	ALU DARK	6	ALU DARK	18x30		
3,0x4,0	C3040 NAB	52	0,21	75x75	ALU DARK	8	ALU DARK	18x30		



LAGO DI GARDA - ITALY



ISRAEL



FINISHING								COLOUR RANGE - ACRYL 350 GR										BASES					
									A1	A1	T2	T3	T6	T7	T8	T9	S1			N°2 BC5151 N°6 BC5050	N°4 BC5151 N°12 BC5050	N°2 BV5050	FISSAGGIO TERRA INGROUND FIX
•	•	•	•	•	•	•	•	-	-					-	-	-		•	•				
•	•	•	•	•	•	•	•	•										•	•				
•	•	•	•	•	•	•	•	•			-	-	-	-	-	-	-	•	•				
•	-	•	•	•	•	•	•	•			-	-	-	-	-	-	-	•	•				
•	•	•	•	•	•	•	•	•										•	•				



Ombrellone a braccio in alluminio.

TELAIO: Interamente in alluminio e acciaio verniciati a polveri colore grigio antracite. Sostegno verticale sez. 8x8 cm. Stecche in alluminio sezione 18x30 mm, facilmente intercambiabili abbinare a corone in plastica brevettate per aumentare la resistenza e durata, semplificare la manutenzione e migliorare il design. Con aggancio singolo dedicato per ogni stecca. Viteria in acciaio inox. Tutti gli accessori sono zincati antiruggine e verniciati a polveri colore antracite. Apertura e chiusura con meccanismo a manovella. Stecca blocco antivento per rendere l'ombrellone più stabile e resistente in caso di vento e con possibilità di inclinazione. Inclusa base in metallo girevole 360°C.

TESSUTO: Acrilico Dralon 350gr/m2 impermeabilizzato e trattato antimuffa garantito Teflon. Con camino antivento. Tinto massa. 5 anni di garanzia

Side post aluminum parasol

FRAME: Aluminum and steel structure epoxy coated anthracite grey color. Side post section 8x8 cm. Easily interchangeable strong aluminum ribs, section 18x30 mm, with patented plastic crowns that increase the resistance and life, simplify the maintenance and improve the design. Accessories in stainless steel. Ribs are properly fixed to the crown one by one. All components are epoxy coated anthracite grey color. Easy opening and closing with crank. With wind stop rib for a better stability of the parasol in windy condition and to allow the inclination of the parasol. 360° rotating metallic base is included.

FABRIC: Acrylic Dralon 350gr/m2 waterproof Teflon and anti-mold treated. With wind cap. Solution dyed. 5 years warranty



.Dimensione (metri)
 .Dimensions (meters)
 .Masse (Meter)
 .Dimensions (metrès)
 .Dimensiones (en metros)
 .Afmeting in (meters)



.Set canaline
 .Raingutter set
 .Rегerinnen
 .Set gouttières
 .Canalizador Lluvias
 .Set regengoten



.Fodero
 .Cover bag
 .Schutzhuelle
 .Housse
 .Forro
 .Afdekhoes



.Viteria in inox e ottone nichelato
 .Screws in Stainless steel and nickel plated brass
 .Edelstahlschrauben und vernickeltes Messing
 .Visserie inox et laiton nickelé
 .Tornillos en acero inoxidable y bronce niquelado
 .Schroeven van rvs en vernikkeld messing



.Codice
 .Code
 .Artikelcode
 .Code
 .Código
 .Artikelcode



.Con base/supporto
 .With base/support
 .Mit Staender/Huelse
 .Avec base/support
 .Con base/ soporte
 .Inclusief standaard



.Doppia carrucola
 .Double pulley
 .Doppelter Seilzug
 .Double poulie
 .Doble polea
 .Dubbele katrollen

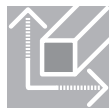


.Tipo finitura della struttura/sostegno/componenti
 .Finishing for frame/structure/components
 .Ausfuehrung des Gestells/der Struktur/der Bestandteile
 .Finition armature/structure/composants
 .Tipo de acabado de la estructura/Soportes/componente

👁 Pag. 68



.Lunghezza
 .Length
 .Laenge
 .Longueur
 .Longitud
 .Lengte



.Sezione stecche
 .Rib section
 .Strebenprofil
 .Section baleines
 .Sección varillas
 .Profiel baleinen



.Sistema telescopico
 .Telescopic system
 .Teleskopsystem
 .Système telescopique
 .Sistema telescópico
 .Telescoop systeem



.Colore dei componenti/stecche
 .Component/Ribs colour
 .Farbe der Bestandteile und Streben
 .Couleur des composants et baleines
 .Color de los componentes ò piezas/Varillas ò listones



.Peso
 .Weight
 .Gewicht
 .Poids
 .Peso
 .Gewicht



.Camino antivento
 .Wind cap
 .Windfang
 .Souffle
 .Chimenea antiviento
 .Windvang



.Sistema retrattile
 .Retractile system
 .Einziehbares System
 .Système retractile
 .Sistema retráctil
 .Inklapbaar systeem



.Stecca con sistema "easy change"
 .Ribs with "easy change" system
 .Streben mit "easy change" System
 .Baleines avec "easy change" système
 .Varillas con sistema de " cambio fácil"
 .Baleinen met het "easy change" systeem



.Volume (m3)
 .Volume (m3)
 .Volumen (m3)
 .Volume (m3)
 .Volumen (m3)
 .Volume (m3)



.Volant
 .Valance
 .Volant
 .Volant
 .Faldón
 .Volant



.Base girevole a 360°C
 .Revolving base 360°C
 .360°C drehbarer Staender
 .Base tournant 360°C
 .Base giratoria 360°
 .360° draaibaar



.Ø Palo (mm)
 .Ø Pole (mm)
 .Ø Mast (mm)
 .Ø Mat (mm)
 .Diametro mm (asta)
 .Ø Mast (mm)



.Blocco antivento
 .Wind stop
 .Windstop
 .Block antivent
 .Freno para el viento
 .Windstop



.Inclinazione fino a 20°
 .Inclination up to 20°
 .Neigung bis zu 20°
 .Inclination jusqu'à 20°
 .Inclinación hasta 20°



.Massima Stabilità Ottenibile
 .Maximum Obtainable Stability
 .Maximal Erhaeltliche Stabilitaet
 .Maximum De Stabilitée Realisable
 .Maxima Estabilidad Posible
 .Maximaal Bereikbare Stabilleit



.Sezione sostegno (mm)
 .Support section (mm)
 .Mastprofil (mm)
 .Section support (mm)
 .Sección soporte (mm)
 .Mast (mm)



.Con meccanismo manovella
 .With winding mechanism
 .Mit Kurbelmechanismus
 .Avec mécanisme manivelle
 .Con manivela
 .Met opwindmechanisme



.Inclinazione fino a 60°
 .Inclination up to 60°
 .Neigung bis zu 60°
 .Inclination jusqu'à 60°
 .Inclinación hasta 60°



.Peso consigliato in condizioni normali
 .Recommended weight in normal condition
 .Empfohlenes gewicht unter normalen bedingungen
 .Poids recommande dans des conditions normales
 .Peso recomendado en condiciones normales
 .Aanbevolen gewicht onder normale omstandigheden



.Stecche
 .Ribs
 .Streben
 .Baleines
 .Varillas
 .Baleinen



.Piastre cemento
 .Cement slabs
 .Kiesbetonplatten
 .Dalles ciment
 .Planchas de cemento
 .Betontegel



.Peso minimo richiesto
 .Minimum ballast required
 .Erforderliches mindestgewicht
 .Poids minimum requis
 .Peso minimo requerido
 .Minimaal vereist gewicht